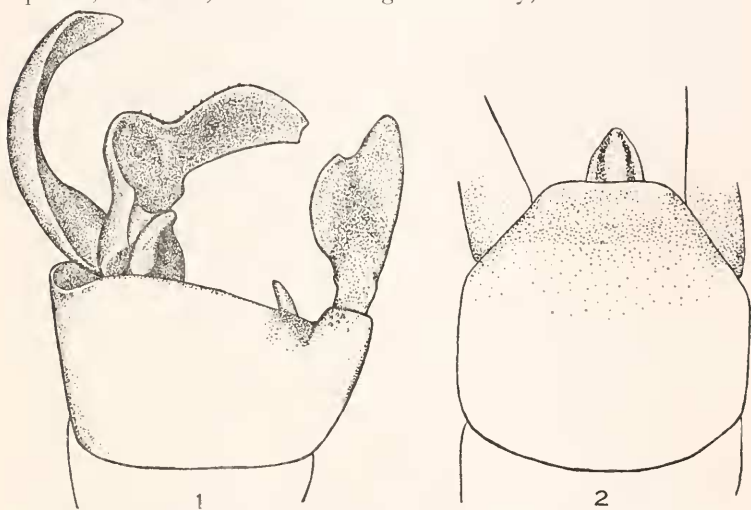


A New *Timema* From California (Orthoptera : Phasmidae).

By H. F. STROHECKER, Department of Zoology, University of Chicago.

This aberrant genus, erected by Scudder in 1895¹ for the single species *californica*, has been sufficiently characterized by Caudell in 1903² and by Hebard, who in 1920³ added a second species, *chumash*, from Los Angeles County, California.



Timema podura sp. n. Fig. 1. Apex of abdomen of ♂ x 30. Fig. 2. Penultimate abdominal segment of ♀, Dorsal view x 30.

Among a small lot of Orthoptera recently received from Mr. A. T. McClay of Hollywood were sixteen specimens of *Timema*, two males and two females of which are *californica*. The remaining twelve specimens are of a species evidently undescribed as yet. Of these four males and six females bear the label "Sequoia National Park, California, May 24, 1929," and one male and one female are labeled "Greenhorn Mt., California, May 17, 1930."

The asymmetrical abdominal appendages of the males, the

¹ Can. Ent., XXVII, p. 30.

² Proc. U. S. Nat'l. Mus. XXVI, p. 883.

³ Ent. News, XXXI, p. 126.

three-jointed tarsi, ventrally attached legs and general habitus refer this species without question to the genus *Timema* of Scudder.

***Timema podura* sp. n.**

Male (Type: Sequoia National Park, CALIFORNIA).

More robust than *californica*, antennae and legs stouter than in that species. Vertex and pronotum smooth, without the low tubercles present in *californica*. Sinistral cercus broad, weakly bifid, somewhat concave above, evenly convex below, with a small basal tooth. Dextral cercus not bifid as in *californica* and *chumash*. Intercercal plate exceptionally large, foot-shaped, concave above. Color tawny with parallel rows of fuscous spots, the general pattern recalling that of *Anisomorpha*.

Female (Allotype: Sequoia National Park, California).

Differing from *californica* in coloration, which is similar to that described for the male. Penultimate tergite posteriorly truncate, the angles rounded. Posterior margin not at all emarginate.

Measurements in Millimeters.

			Length of	Length of	Width of	Length of
Males			Body	Pronotum	Pronotum	caudal tibia
Sequoia Nat'l Park			13.7	2.1	2.9	3.2
"	"	"	13.5	2.1	2.9	3.1
"	"	"	13.7	2.0	2.9	3.1
"	"	"	14.0	2.1	2.9	3.2
Greenhorn Mt.			13.0	2.1	2.7	3.0
Sequoia Nat'l Park			18.4	2.7	3.2	3.4
"	"	"	18.9	2.5	3.2	3.7
"	"	"	22.0	2.9	3.9	4.2
"	"	"	19.4	2.7	3.8	4.0
"	"	"	18.5	2.6	3.5	3.8
"	"	"	19.0	2.7	3.6	3.5
Greenhorn Mt.			18.4	2.7	broken	3.8

One male and one female labelled "type" and "allotype" respectively will be deposited in the U. S. National Museum. A pair of paratypes has been placed in the Hebard collection in Philadelphia.

***Thysania zenobia* in Maine (Lepid.: Noctuidae).**

The Noctuid moth *Thysania zenobia* Cramer was taken in Augusta, Maine, October 14, 1936. The moth was found on the ground in a lively condition.—ROBLEY W. NASH, State of Maine Forest Service, Augusta.